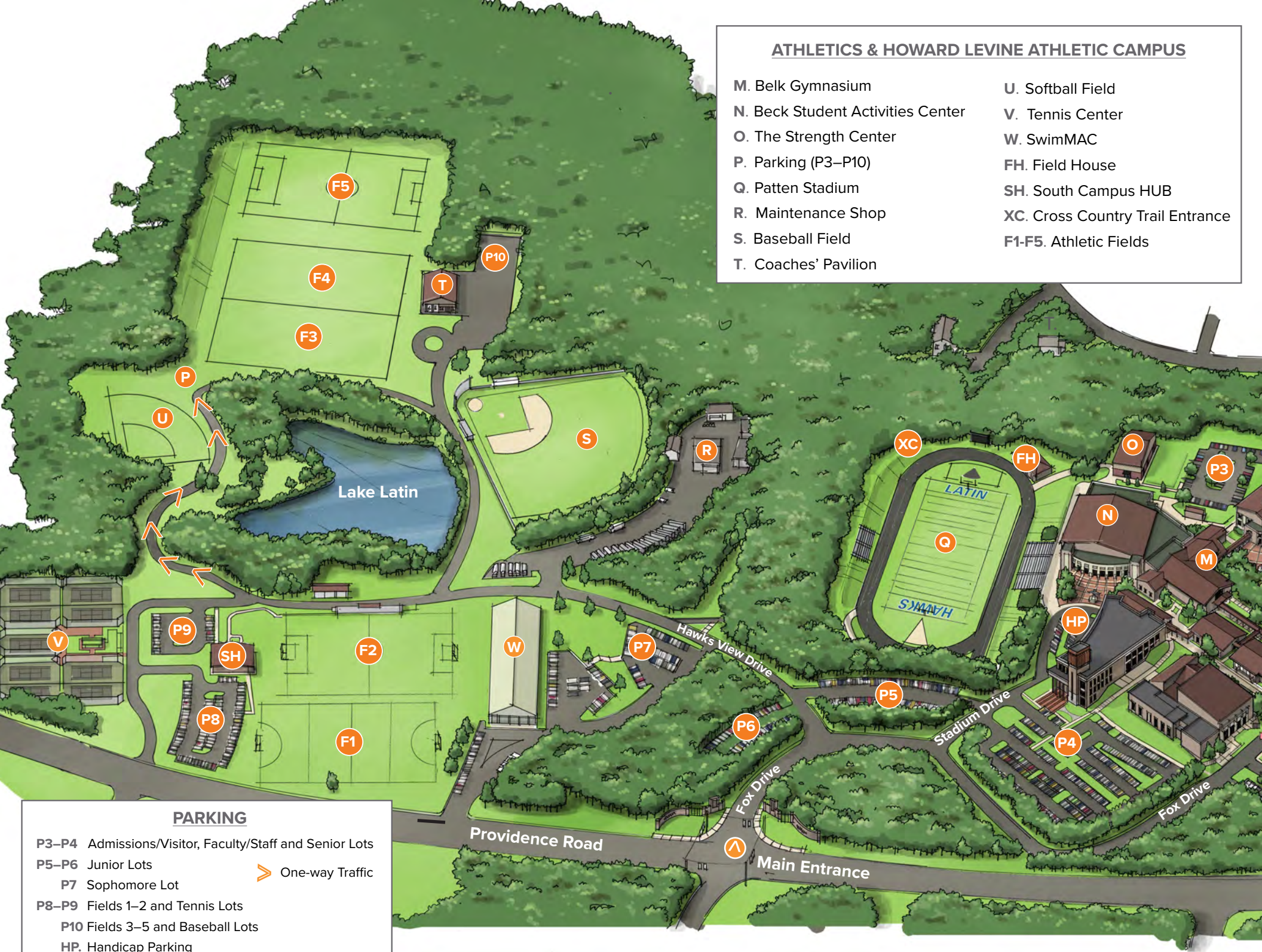


## ATHLETICS & HOWARD LEVINE ATHLETIC CAMPUS

- |                                   |                                  |
|-----------------------------------|----------------------------------|
| M. Belk Gymnasium                 | U. Softball Field                |
| N. Beck Student Activities Center | V. Tennis Center                 |
| O. The Strength Center            | W. SwimMAC                       |
| P. Parking (P3–P10)               | FH. Field House                  |
| Q. Patten Stadium                 | SH. South Campus HUB             |
| R. Maintenance Shop               | XC. Cross Country Trail Entrance |
| S. Baseball Field                 | F1–F5. Athletic Fields           |
| T. Coaches' Pavilion              |                                  |



### PARKING

- P3–P4 Admissions/Visitor, Faculty/Staff and Senior Lots  
P5–P6 Junior Lots  
P7 Sophomore Lot  
P8–P9 Fields 1–2 and Tennis Lots  
P10 Fields 3–5 and Baseball Lots  
HP. Handicap Parking
- One-way Traffic